

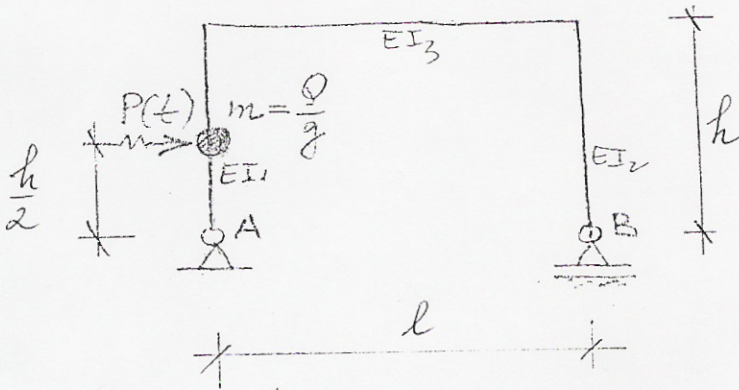
(instituția de învățământ superior)

Facultatea

Catedra

BILET DE EXAMEN Nr. 1

An de studii



$Q = 50 \text{ kN}$
 $EI_1 = 25000 \text{ kNm}^2$
 $EI_2 = 30000 \text{ kNm}^2$
 $EI_3 = 18000 \text{ kNm}^2$
 $P(t) = P_0 \sin \Omega t$
 $P_0 = 10 \text{ kN}$
 $\Omega = 8 \text{ rad/s}$

$l = 6 \text{ m}$
 $h = 4 \text{ m}$

inator,

17-2-29 A5 11

P. „Filaret” II — c. 4141.91

Sesiunea 199..

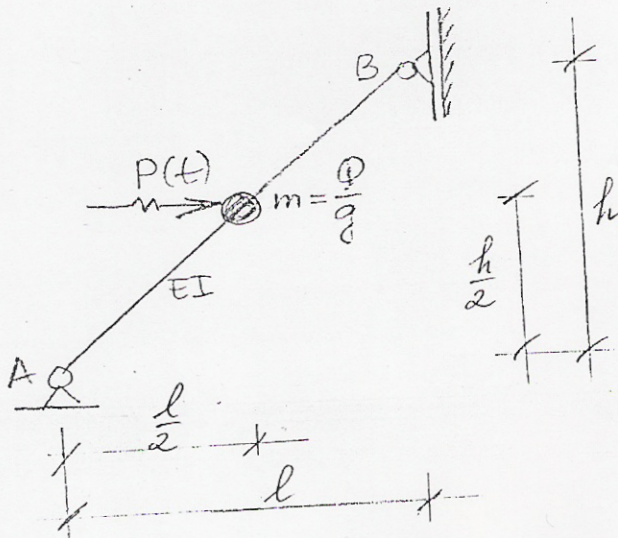
(instituția de învățământ superior)

Facultatea

Catedra

BILET DE EXAMEN Nr. 14

An de studii



$Q = 50 \text{ kN}$
 $EI = 20000 \text{ kNm}^2$

$P(t) = P_0 \sin \Omega t$
 $P_0 = 10 \text{ kN}$
 $\Omega = 8 \text{ rad/s}$

$l = 6 \text{ m}$
 $h = 4 \text{ m}$

Examinator,