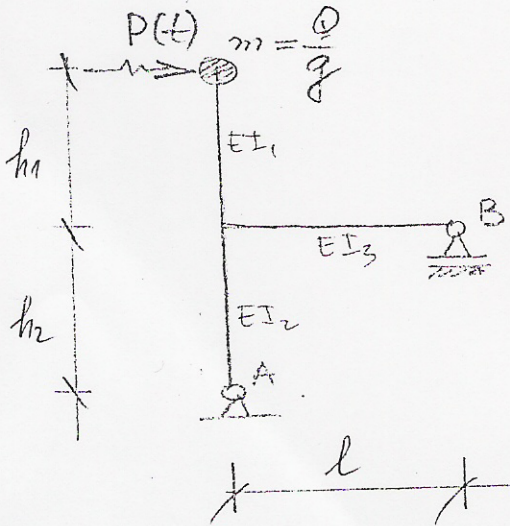


BILET DE EXAMEN Nr. 3

An de studii



$$Q = 50 \text{ kN}$$

$$EI_1 = 15000 \text{ kN}\cdot\text{m}^2$$

$$EI_2 = 16000 \text{ kN}\cdot\text{m}^2$$

$$EI_3 = 20000 \text{ kN}\cdot\text{m}^2$$

$$P(t) = P_0 \sin \Omega t$$

$$P_0 = 8 \text{ kN}$$

$$\Omega = 7 \text{ rad/s}$$

$$l = 3 \text{ m}$$

$$h_1 = 4 \text{ m}$$

$$h_2 = 5 \text{ m}$$

17-2-29 A5 1
"P. P. Filaret" II - c. 4141 13
Sesluhea 1997

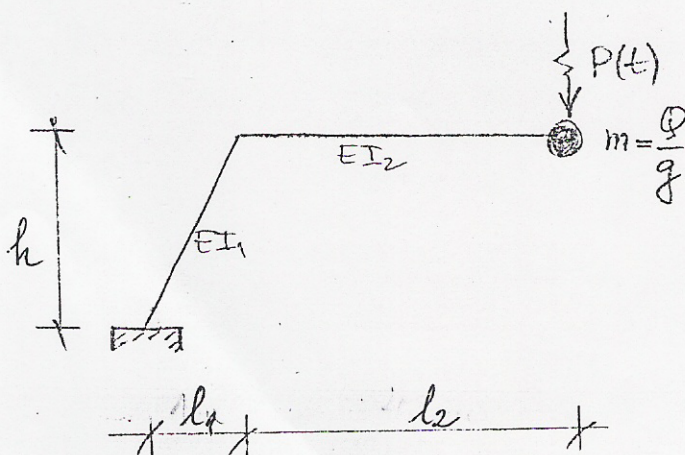
(instituția de învățământ superior)

Facultatea

Catedra

BILET DE EXAMEN Nr. 20

An de studii



$$Q = 40 \text{ kN}$$

$$EI_1 = 15000 \text{ kN}\cdot\text{m}^2$$

$$EI_2 = 20000 \text{ kN}\cdot\text{m}^2$$

$$P(t) = P_0 \sin \Omega t$$

$$P_0 = 10$$

$$\Omega = 8 \text{ rad/s}$$

$$h = 4 \text{ m}$$

$$l_1 = 2 \text{ m}$$

$$l_2 = 4 \text{ m}$$

Examinator,