

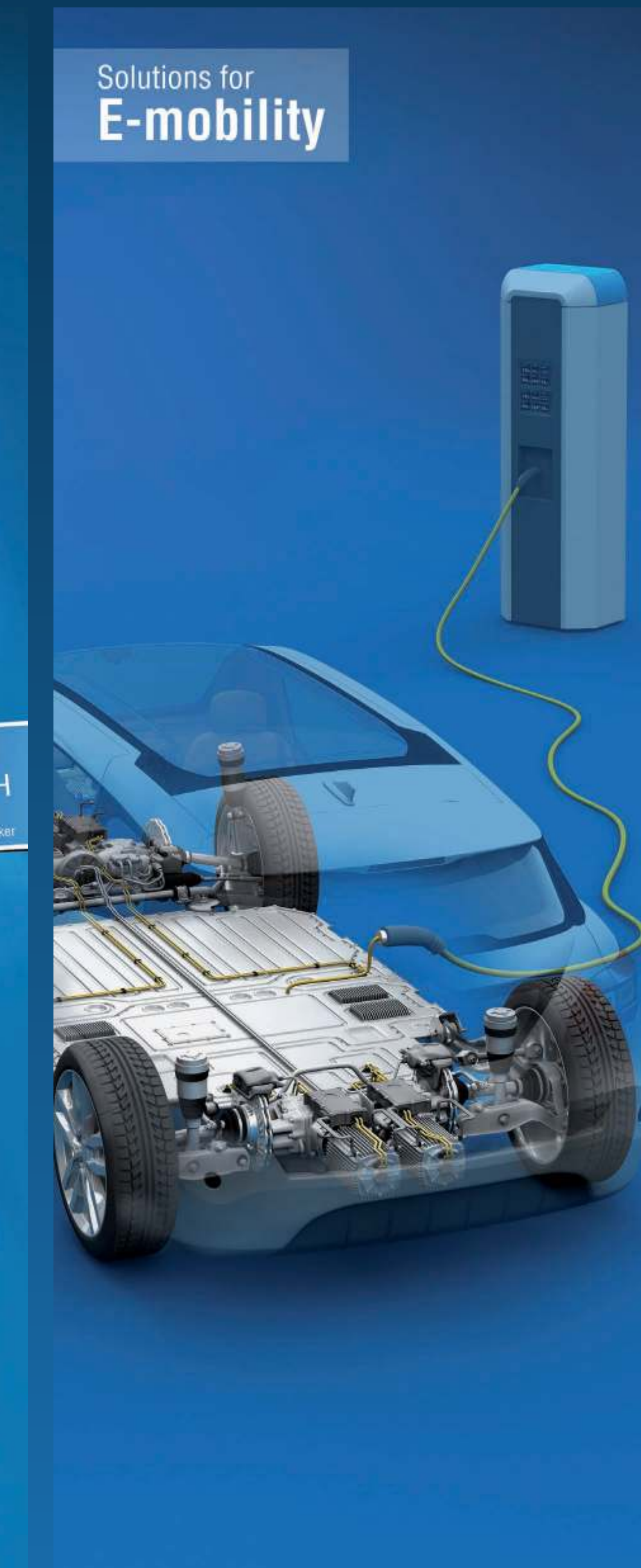
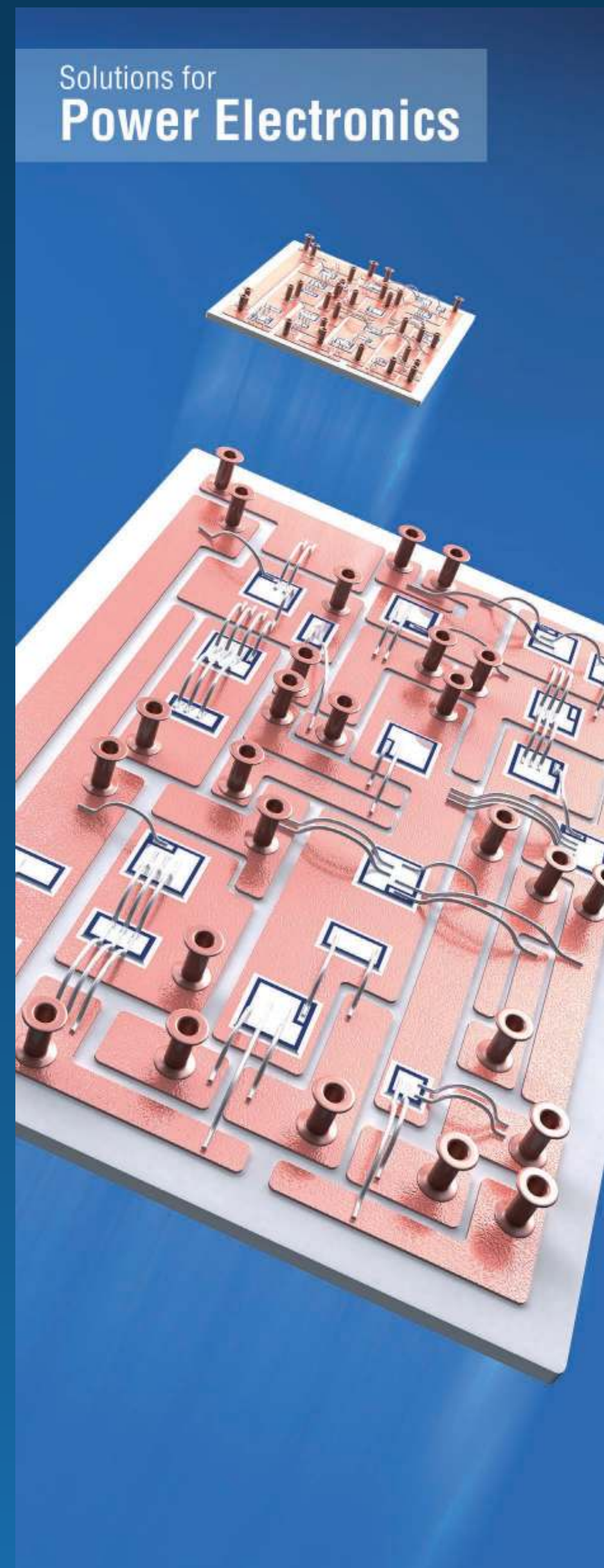
SUMMER INTERNSHIP 2022

Join our 10-weeks paid internship, starting 18th of July 2022, with the possibility to develop the Bachelor Thesis with Baumann afterwards. You will have the opportunity for practical work with Staubli robots and Beckhoff PLC programming, guided by our specialists.

Send your application to dan.negrea@baumann-automation.com

AUTOMATION

baumann



Baumann develops and produces turn-key automation systems for customers from various international industries including the automotive suppliers, electronics and domestic appliances. Everything from a single source – from a stand alone robot cell to a fully automated production line.

With over 35 years of experience Baumann knows the market and recognises the latest trends and developments in industrial production, providing you with flexibility and efficiency gains and a competitive advantage in your industry. Future-oriented tasks such as autonomous driving, e-mobility, digitization or Industry 4.0 are the focus of Baumann's work.

Today, the family-owned company employs over 600 people at its headquarters in Amberg. Service centers in China, Romania, Taiwan, the Philippines, the USA and Mexico ensure customer proximity worldwide. More than 4,000 robot cells and production plants are in use worldwide by customers in 22 countries. With an annual turnover of 90 million euros and an office and production area of more than 20,000 square meters, Baumann Automation sets up for the future.

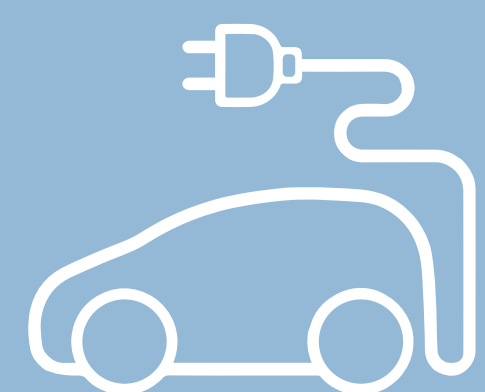
S.C. Baumann Automation S.R.L.

Str. Traian Vuia nr. 141C
400396 Cluj-Napoca
Romania

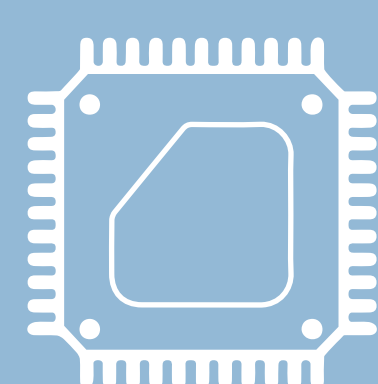
Contact: Dan Negrea
dan.negrea@baumann-automation.com
Phone +40 264 480 320
Mobile +40 760 139 902



Autonomous driving



E-mobility



Power electronics

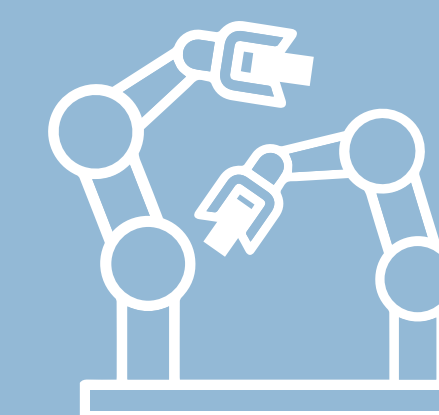


Battery

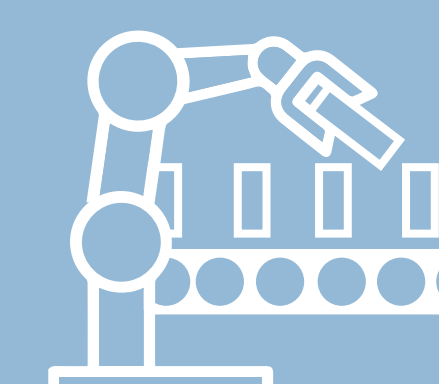


Industry 4.0

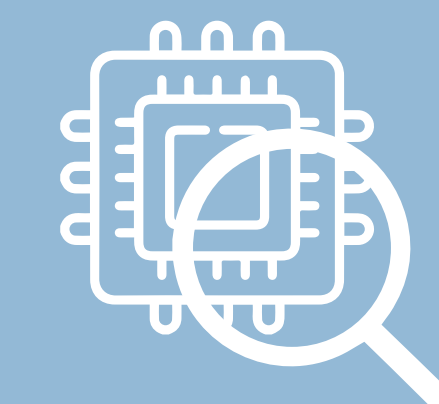
PARTS	ROBOT	FUNCTION	GRAP	FEED BOX	OBJECT	MODULE	BAUMANN
<p>OBJECT #892ABC-3061</p>			<p>OBJECT #300EC-5941</p> <p>Baumann liefert seit mehr als 30 Jahren Montagesysteme an First-Tier-Supplier und Tier-N-Supplier. Wir erarbeiten mit unseren Kunden die optimalen Automations-systeme in Bezug auf Kosten, Qualität und Flexibilität – und dies im typischen Projekt-geschäft der Automobilbranche.</p>	<p>OBJECT #678AC-3021</p>	<p>DESCRIPTION OF OBJ: #AC50</p> <p>Bei der Fertigung von Platinen werden im Auto-motive-Bereich, in der Telekommunikation oder zum Beispiel in der Elektronikindustrie Baugrup-pen nebeneinander auf größeren Trägereinheiten, sogenannten Nutzen, produziert.</p> <p>Baumann bietet neben dem speziellen Know-how im Bereich Beladen, Pick & Place und Entladen auch umfassendes Expertenwissen auf dem Gebiet der Vereinzelung von Leiterplatten.</p> <p>Mit der routlbox und der delbox stellen wir Ihnen zwei standardisierte und wirtschaftliche Lösungen auf dem Sektor der Platinen-Vereinzelung zur Ver-fügung.</p> <p>In der Baumann routlbox arbeitet ein Fingerfräser, der auf einem freiprogrammierbaren Achssystem die verschiedensten Formen von Leiterplatten vereinzeln kann.</p>	<p>OBJECT #FF-12-DF-494215</p>	
<p>DESCRIPTION OF OBJ: #3021</p> <p>Die Baumann feedbox ist eine flexible Roboter-plattform für das Beladen und Entladen von Bear-beitungsmaschinen. Die Bauteilübergabe erfolgt direkt oder indirekt in das Bearbeitungs-nest. Die feedbox kann stand-alone oder inline betrie-ben werden und ist für Roboter und Portalsysteme geeignet.</p> <p>Baumann Automation bietet seinen Kunden per-fekte Lösungen für automatisierte Qualitätskon-trollen, die bei laufender Produktion die ferti-gungsbezogenen Parameter kontrollieren und mögliche Fehlerquellen zeitnah erkennen.</p>				<p>OBJECT #I-O5-8763</p>			<p>IMG #650FA-210</p>



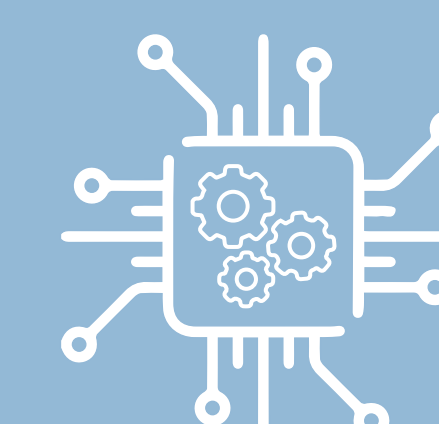
Assembly



Loading systems



Testing



System integration

Baumann develops and produces turn-key automation systems for customers from various international industries including the automotive suppliers, electronics and domestic appliances. Everything from a single source – from a stand alone robot cell to a fully automated production line.

With over 35 years of experience Baumann knows the market and recognises the latest trends and developments in industrial production, providing you with flexibility and efficiency gains and a competitive advantage in your industry. Future-oriented tasks such as autonomous driving, e-mobility, digitization or Industry 4.0 are the focus of Baumann's work.

Today, the family-owned company employs over 600 people at its headquarters in Amberg. Service centers in China, Romania, Taiwan, the Philippines, the USA and Mexico ensure customer proximity worldwide. More than 4,000 robot cells and production plants are in use worldwide by customers in 22 countries. With an annual turnover of 90 million euros and an office and production area of more than 20,000 square meters, Baumann Automation sets up for the future.

S.C. Baumann Automation S.R.L.

Str. Traian Vuia nr. 141C
400396 Cluj-Napoca
Romania

Contact: Dan Negrea
dan.negrea@baumann-automation.com
Phone +40 264 480 320
Mobile +40 760 139 902